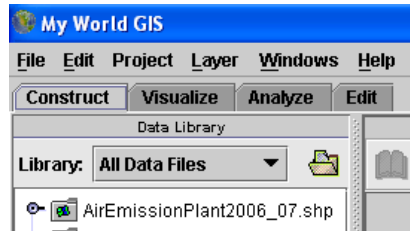




My World GIS Contest Skills

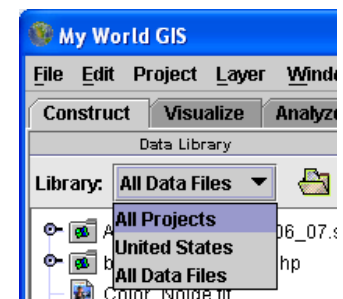


1. Open Program - click on MyWorld icon on desktop.

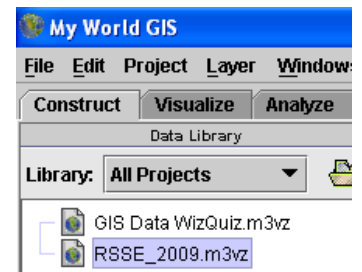


2. Note four tabs - Construct, Visualize, Analyze & Edit

3. Choose "All Projects" in the drop-down list in the Construct tab.



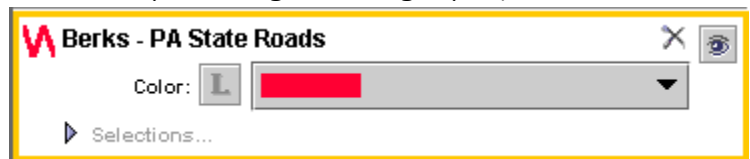
4. Double-click on "RSSE_2010.m3vz" to open the project. The map will appear and you will be in Visualize mode with the legend on the left. In the image, you can see McCulloch Hall, Nolde Mansion and the Maintenance Shed.



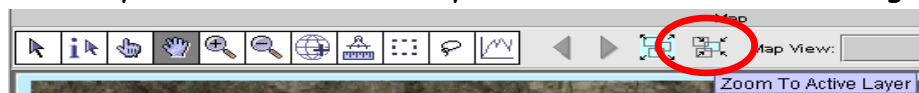
5. Make "Berks - PA State Roads" the active layer by clicking on its name—its perimeter will turn orange.




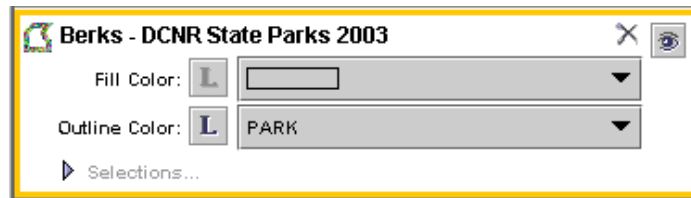
6. Make "Berks - PA State Roads" visible by clicking on the gray square beside its name in the legend—an eye appears in the gray square, but where are the roads?




7. Click the Zoom To Active Layer button in the toolbar above the map. The PA State roads of Berks County become visible. Can you see the Nolde Forest image?



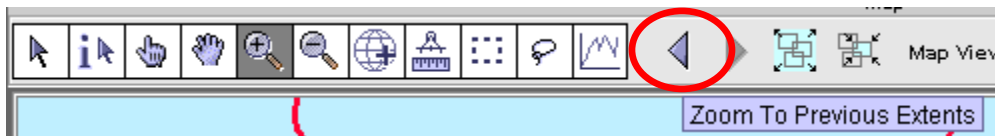
8. Turn on the "Berks - DCNR State Parks 2003" layer, make it active and visible , then click the Zoom to Active Layer button.




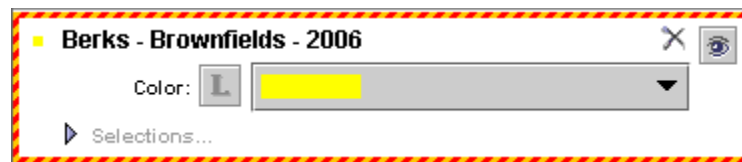
9. The legend tells you that the green outline is Nolde Forest. Click the Zoom In tool  and drag a box around the green outline to zoom into the Nolde Forest area. Your map should look something like this:



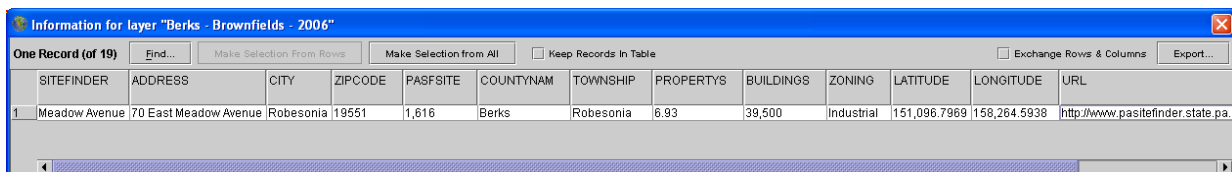
10. Click the Zoom To Previous Extents tool two times to see all of Berks County again. If that does not work, make the State Roads layer active again and use the Zoom To Active Layer tool.



11. Turn on the "Berks - Brownfields 2006" layer and make it active. Brownfields are plots of land that were once industrial sites that may have soil, water or air contamination problems. Click on the Get Information tool  and notice the "caterpillar effect" around the layer in the legend.



12. Click on the yellow dot farthest west on the map. The window that opens provides information about the site: name, address, acreage, building square footage, zoning classification, the web address where the data may be viewed.
13. Close the 'Information for layer "Berks - Brownfields - 2006"' window.



	SITEFINDER	ADDRESS	CITY	ZIPCODE	PASFSITE	COUNTYNAM	TOWNSHIP	PROPERTY	BUILDINGS	ZONING	LATITUDE	LONGITUDE	URL
1	Meadow Avenue	70 East Meadow Avenue	Robesonia	19551	1,616	Berks	Robesonia	6.93	39,500	Industrial	151,096.7969	158,264.5938	http://www.pasfinder.state.pa

14. Click the Show Table Of The Active Layer button above the legend. A table will open showing all the data available for the Berks - Brownfields 2006 layer.

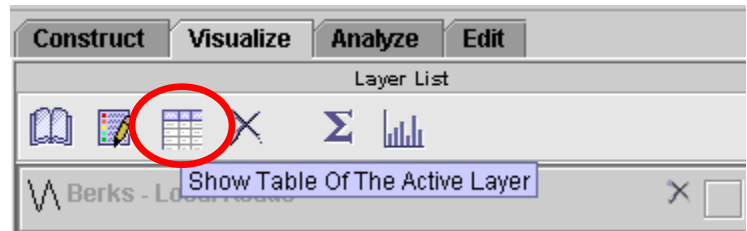


Table of Layer "Berks - Brownfields - 2006"

19 Records (of 19) Find... Make Selection From Rows Exchange Rows & Columns Export...

	SITEFINDER	ADDRESS	CITY	ZIPCODE	PASFSITE	COUNTYNAM	TOWNSHIP	PROPERTYTS	BUILDINGS	ZONING	LATITU
1	7 Up Bottling Building	115 Little Rock Road	Muhlenburg	19605	1,617	Berks	Muhlenburg	22	42,000	Industrial	155,38
2	Meadow Avenue	70 East Meadow Avenue	Robesonia	19551	1,616	Berks	Robesonia	6.93	39,500	Industrial	151,08
3	Beverly Building	3 Morgan Drive	Spring Township	19608	1,615	Berks	Spring Township	2	6,250	Commercial	146,88
4	V & S Site	2224 State Hill Road	Wyomissing	19610	1,620	Berks	Wyomissing	.63	5,000	HC	150,77
5	M & T Bank Building	210 George Street	Muhlenburg	19605	1,618	Berks	Muhlenburg	2.5	42,000	HC	155,10
6	210 George Street	210 George Street	Reading	19605	1,556	Berks	Muhlenburg Twp	1.5	41,466	Commercial	155,10
7	The Gateway Building	201 Penn Street	Reading	19601	1,557	Berks	City of Reading	1.17	95,000	Commercial	150,32
8	Former Sovereign Bank Call Center	525 Lancaster Avenue	Reading	19607	1,577	Berks	Reading	4	154,000	HC	147,22
9	Lancaster Avenue	700 Lancaster Avenue	Reading	19607	1,619	Berks	Reading	.5	16,000	HC	148,28
10	Excelsior Brass	467 Tulpehocken Street	Reading	19601	1,425	Berks	City of Reading	1.02	0	Commercial	151,07
11	Block F	701-763 Penn Street	Reading	19601	1,426	Berks	City of Reading	2.79	0	commercial core	150,32
12	Parcel H-3	644 Penn Street	Reading	19601	1,427	Berks	City of Reading	0.39	0	commercial core	150,32
13	Riverfront Lot 1	408-18 S. 4th Street	Reading	19601	1,428	Berks	City of Reading	0.39	0	commercial/residential	149,43
14	Riverfront Lot 2	411-23 S. 3rd Street	Reading	19602	1,429	Berks	City of Reading	0.34	0	commercial/residential	149,87
15	Parcel 32	600 Canal Street	Reading	19602	1,430	Berks	City of Reading	1.84	0	commercial/residential	149,18
16	Parcel 15	350 West Buttonwood Street	Reading	19601	1,431	Berks	City of Reading	1.04	0	commercial/residential	151,02
17	Parcel 18	19 N. 2nd Street	Reading	19601	1,432	Berks	City of Reading	0.76	0	commercial/residential	150,43
18	1122 Butler Street	1122 Butler Street	Reading	19601	1,095	Berks	City of Reading	.56	23,781	M/C Manufacturing Commercial	151,93
19	Bally Brook Business Center	20 N. Front Street @ Route 100	Bally	19503	1,096	Berks	Bally Borough	11	296,000	Light Industrial	144,43

Examples of information in the brownfields database:

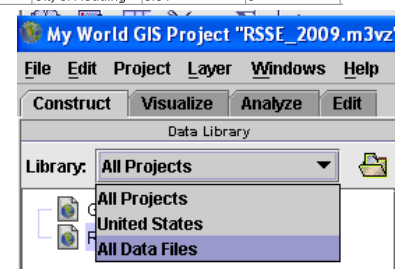
- The database includes 19 records.
- The largest is a 22-acre site.
- The site with the largest area under roof is the Bally Brook Business Center at 296,000 square feet.
- Three of the sites carry an industrial classification.
- Thirteen of the sites are in Reading.

15. You can sort the table by any category by left-clicking on the Field Heading name. Sort the table by Property Size—Left-click on "PROPERTYTS". Close the 'Table of Layer "Berks - Brownfields - 2006"'.
 16. You may add a new layer to the map by clicking on the Construct tab, All Data Files and choosing a layer from the resulting list that you want to add.

Table of Layer "Berks - Brownfields - 2006"




19 Records (of 19) Find... Make Selection From Rows Exchange Rows & Columns Export...

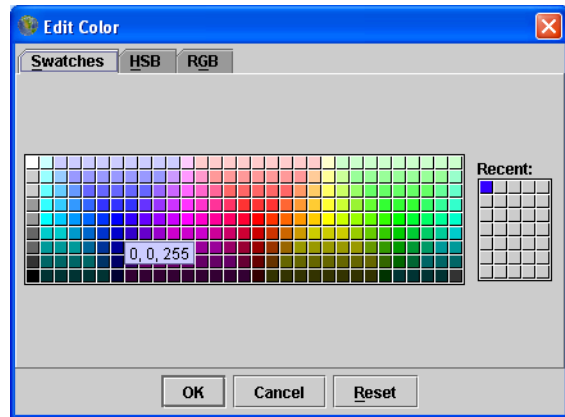
	SITEFINDER	ADDRESS	CITY	ZIPCODE	PASFSITE	COUNTYNAM	TOWNSHIP	PROPERTYTS	BUILDINGS
1	Lancaster Avenue	700 Lancaster Avenue	Reading	19607	1,619	Berks	Reading	.5	16,000
2	1122 Butler Street	1122 Butler Street	Reading	19601	1,095	Berks	City of Reading	.56	23,781
3	V & S Site	2224 State Hill Road	Wyomissing	19610	1,620	Berks	Wyomissing	.63	5,000
4	Riverfront Lot 2	411-23 S. 3rd Street	Reading	19602	1,429	Berks	City of Reading	0.34	0



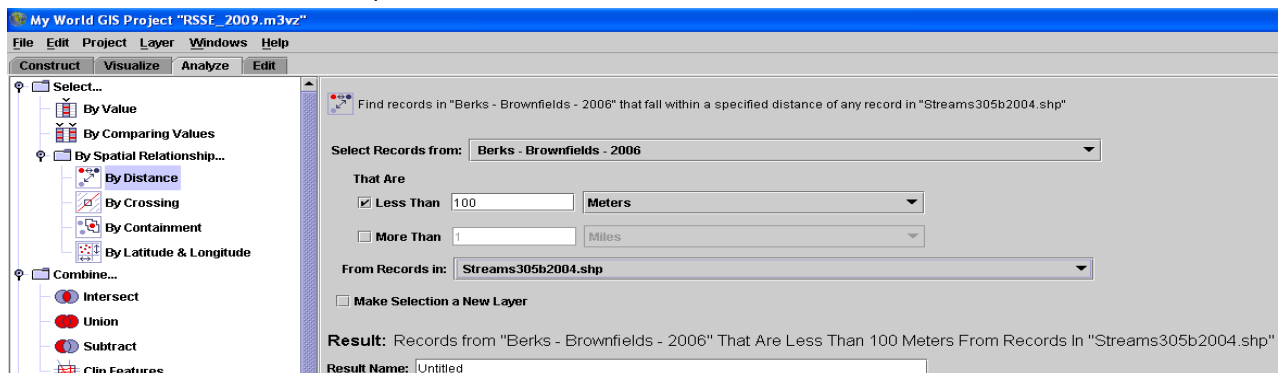
17. Add the "Streams305b2004.shp" layer to your map by dragging it to the Layer List. Place it directly under the roads.





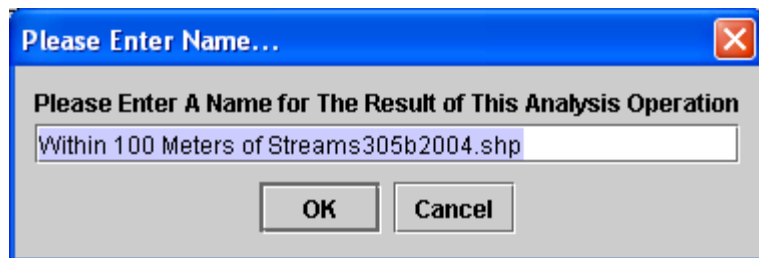
18. Double-click on the Streams symbol to Edit The Appearance of the streams to blue. Click on the color swatch  to open the Edit Color window. Choose some shade of blue for the stream color. Click the  button, then the  button to cause the color change.



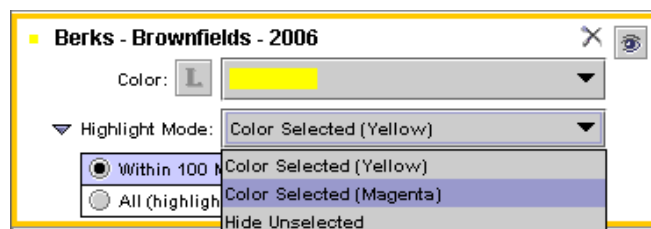
19. Use the Analyze tab to find how many of the Brownfield sites are within 100 meters of a Berks County stream.


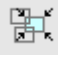


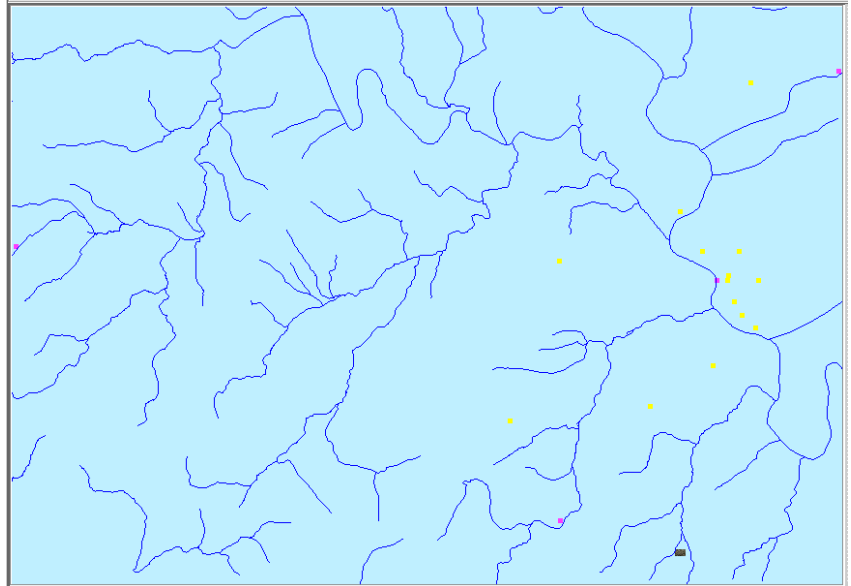
20. Click  to perform the analysis. Click  again to allow My World to select the name for the new layer.



21. Change the Highlight Color of the Brownfields Within 100 Meters of Streams to Magenta.



22. Drag the Brownfields layer to the top of the Layer List. Turn the Roads off  and Zoom to Active Layer . You should see that some of the Brownfields are magenta instead of yellow and that they are the ones closest to the streams.



23. Open the Selection Layer's table to view the list of four Brownfield sites that are within 100 meters of Berks County streams.


Selection "Within 100 Meters of Streams305b2004.shp"


Selection Name: Within 100 Meters of Streams305b2004.shp

Description: Records from "Berks - Brownfields - 2006" That Are Less Than 100 Meters From Records In "Streams305b2004.shp"

4 Records (of 19) Find... Make Selection From Rows Convert to Layer... Exchange Rows & Columns Export...

	SITEFINDER	ADDRESS	CITY	ZIPCODE	PASFSITE	COUNTYNAM	TOWNSHIP	PROPERTYT	BUILDINGS	ZONING	LATITUDE	LONGITUDE	UI
1	7 Up Bottling Building	115 Little Rock Road	Muhlenburg	19605	1,617	Berks	Muhlenburg	22	42,000	Industrial	155,395.7969	178,229.2031	htt
2	Meadow Avenue	70 East Meadow Avenue	Robesonia	19551	1,616	Berks	Robesonia	6.93	39,500	Industrial	151,096.7969	158,264.5938	htt
3	Block F	701-763 Penn Street	Reading	19601	1,426	Berks	City of Reading	2.79	0	commercial core	150,327.0938	175,271.2031	htt
4	Bally Brook Business Center	20 N. Front Street @ Route 100	Bally	19503	1,096	Berks	Bally Borough	11	296,000	Light Industrial	144,474	171,487.9062	htt

24. Zoom to All  to see all of Berks County again.

25. In the Edit/Preferences drop-down menu, change the Measurement Unit to "Miles". Turn on the U.S. Counties layer and the PA - Cities/Towns/Boroughs layer. Zoom to the PA - Cities/Towns/Boroughs layer . Use the Measurement tool to measure the distance from the center of the layer's largest City/Town/Borough to Nolde Forest. You should get something in the vicinity of 158 miles.

26. You now know some of the basic skills used in My World GIS Software—use these skills to complete the contest questions in the Geographic WizQuiz later on.